



# Need to know about price movements for construction costs?

Reed Construction Data now produces a quarterly **Cordell Building Indices (CBI) Report**, which details the movement in costs associated with building work within particular segments of the industry.

Measured daily and reported quarterly, the CBI indicates **the change in the cost of constructing buildings**.

Each index is based on a combination of **labour, material, plant hire** and **subcontract** services, giving you the most comprehensive assessment of the movement in building costs available.

The CBI is currently available for the **Residential** sector, and is known specifically as the **Cordell Housing Index Price (CHIP) Report**. The residential market covers freestanding & semi-detached single and two-storey dwelling homes.

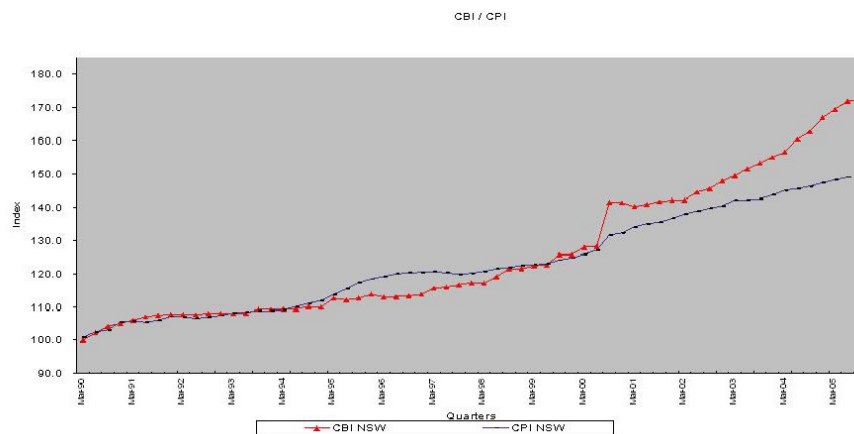
## Summary of CHIP Report features:

- Figures for the current quarter, plus historical figures going back some 15 years.
- Instructions on how to use the Index
- Category movements – how prices have moved within each category
- CHIP v CPI – how the CHIP compares to the Consumer Price Index



## Available for:

- New South Wales
- Victoria
- Queensland
- South Australia
- Western Australia



## Categories included in the CHIP Report:

- Preliminaries
- Excavation
- Concrete work
- Brickwork
- Carpentry
- Insulation
- Joinery
- Glazing
- Hardware
- Roofing
- Roof plumbing
- Windows
- Doors
- Plastering
- Tiling
- Painting
- Plumbing
- Drainage
- Electrical
- Sundry Appliances

In the future, indexes will be available for the **commercial, industrial** and **high rise residential** sectors. Stay tuned for more news about this.

For more information, or to order your **CHIP Report**, contact our Costing Team on **1800 80 60 60** or email [marketing@rcd.com.au](mailto:marketing@rcd.com.au)