



# Cordell® Valuer

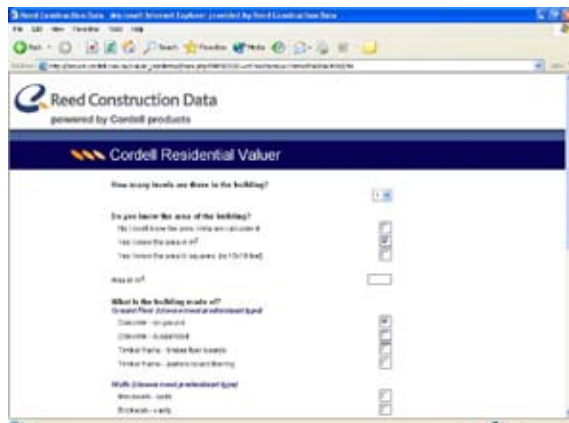
## Realistically calculate the estimated construction cost of a building at the click of a mouse

Cordell Valuer has been developed specifically to assist people to quickly and easily calculate the replacement cost of a building.

Imagine meeting a prospective client and being able to give them a realistic estimate of building their dream home in minutes. You can sit alongside the architect and talk realistic budgets by simply answering specific questions on the style of the home and quality of the finishes. Immediately demonstrate to your clients the difference in the overall budget through their choice of finish, size and other inclusions, preventing disappointment should the quote come in over budget.

Cordell Valuer is written in everyday language, so your clients don't need a solid knowledge of building to understand your report. The software uses the researched costing information that Cordell building cost information has been built on for the past 35 years. This means true budget expectations right from the beginning, giving you a smoother relationship with both the consultants and your clients.

- Fully supported by the Reed Construction Data Help Desk
- Full training support
- Web format
- Cost data updated quarterly



### Typical Questions

- Building Type
- Number of Storeys
- Ceiling Height
- Style
- Construction Standard
- Slope of Land
- Floor, Wall and Roof Type
- Size
- Number of Bathrooms
- Verandahs
- Balconies
- Pergolas
- Carports, Garages
- Special Internal Features
- External Features